

MXS-9200 OPTICAL SWITCH

AVAILABLE EXCLUSIVELY FROM EXFO



This latest generation in the MXS optical switch series, the MXS-9200 is a laboratory-grade, high performance optical switch optimized for use with EXFO LTB solutions and with software control via SCPI over ethernet. The MXS-9200 enhanced platform utilizes DiCon Fiberoptics' industry proven MEMS optical switch technology to reliably connect fibers together in a fully automated and open loop operation.

Available with either non-blocking MxN matrix switches, or with an array of 1xN optical switches, the MXS-9200 is the industry standard for sharing centralized instruments or automated testing on multiple devices in development, qualification, and production testing.

The MXS-9200 is the successor and replacement to the popular MXS-9100.

ENHANCED MXS-9200 PLATFORM AND TOOLKIT

- Research-grade optical performance with excellent crosstalk, repeatability and stability
- High density design in many fiber types (SM, PM, MM)
- High speed SCPI over ethernet and REST API remote control
- Front panel display and controls
- Powerful WEB GUI for local control and administration
- Field serviceable software upgrade
- Dual ethernet ports for redundant network interface
- Removable control unit and power unit

AVAILABLE CONFIGURATIONS

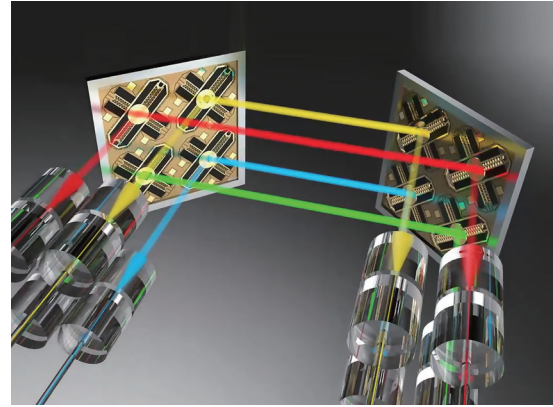
| CONFIGURATION | | SWITCH SIZE | | FIBER TYPE |
|---------------|------------|-------------|---------|-----------------------------|
| # | TYPE | MIN | MAX | |
| 1 | MxN Matrix | 2x8 | 192x192 | Singlemode |
| 2 | MxN Matrix | 2x8 | 32x32 | SM Polarization Maintaining |
| 3 | MxN Matrix | 2x8 | 64x64 | Multimode |
| 4 | 1xN Array | 1x4 | 1x8 | Singlemode |
| 5 | 1xN Array | 1x4 | 1x4 | SM Polarization Maintaining |



INDUSTRY LEADING MEMS TECHNOLOGY

DiCon's MEMS Matrix Switch components are produced based on DiCon's proprietary and proven MEMS tilting mirror technology. This MEMS mirror platform has been built into millions of components for the optical networking industry and comes with a 20 plus years of field deployment record. DiCon's MEMS Matrix Switches are extremely stable and can operate under open-loop conditions.

They have the best-in-the-class durability, repeatability, and optical performance, suitable for even the most demanding applications including QUANTUM communications and computing.



KEY OPTICAL SWITCHING FEATURES

High Stability and best-in-class overall performance – The optical alignment is extremely stable offering exceptional repeatability and IL stability, even when subject to typical vibrations normally associated with factory installations.

High Reliability – An open-loop design reduces design complexity with fewer components and subsystems, resulting in improved overall long-term reliability, not just on the expected number of switch cycles, but on the overall operation.

Unique multi-port-single-command switching – This time-saving feature is available through the remote-control command set and allows changing multiple ports with a single command. This offers a significant improvement in productivity, and simplifies the automation software, particularly with high port-count switches.

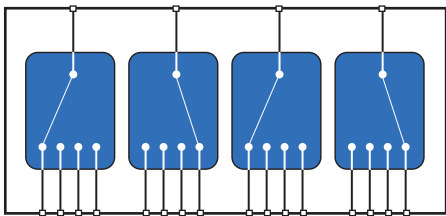
No dithering or active-alignment artifacts – With open-loop operation once the in and out ports are aligned, there is no requirement to monitor, feedback, and apply corrections to the alignment. The MXS-9200 matrix switch assures the optical alignment through a mechanically stable design along with in-house proprietary MEMS technology.

No limitations on input power levels – Since there is no active monitoring, the MXS-9200 matrix switches can reliably align even very low power levels. This is important when performing tests over a wide range of power levels, for example in transceiver sensitivity testing.

Protocol and bit rate independent – When testing optical transmission, it is important that there are no signal instabilities, dithering, and/or internal interference along the optical path. The MXS-9200 matrix switch provides a clean and stable optical path whether singlemode, polarization maintaining, or multimode configuration.

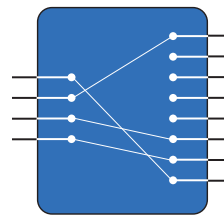
MXN MATRIX AND 1XN ARRAY CONFIGURATIONS

Depending on your application and requirements, the MXS-9200 is available with either an MXN matrix configuration, or with an Array of 1XN switches. Both matrix and 1XN are available with either Singlemode, Polarization Maintaining, or Multimode fiber.



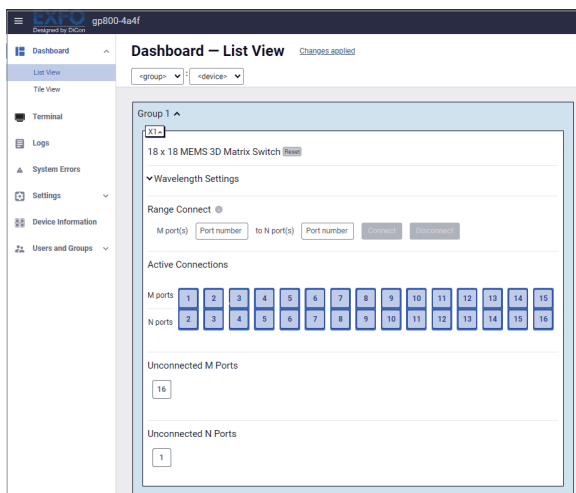
1XN ARRAY CONFIGURATION

In the 1xN array configuration, the MXS-9200 will have an array (1, 2, 4, 6, or 8) of 1XN switches. Each of the 1XN switches can be controlled independently. This option provides a convenient and compact series of high performance 1XN switches. In the diagram above the MXS-9200 is configured with a 4 X 1X4 switch array



MXN MATRIX CONFIGURATION

In the MXN matrix configuration, the MXS-9200 will have a single matrix switch with M inputs and N outputs. Any input port can be connected to any output port. This configuration is often used for testing multiple components while sharing the same testing instruments. In the diagram above, the MXS-9200 is configured with a 4x8 matrix switch



MXS-9200 WEB GUI

The convenient and powerful WEB GUI is ideal for laboratory and research work where flexible local control from any WEB browser allows full administration, sharing, and operational control. Use the WEB GUI to do all your ad-hoc testing and use the powerful remote commands for integration into your automation testing environment.

SINGLEMODE MXN MATRIX, MXS-9200 OPTICAL SWITCH

OPTICAL SPECIFICATIONS^{1,2}

| PARAMETER | RATING |
|-----------------------------|--|
| Insertion Loss ³ | 0.8 dB typical 1.4 dB max. |
| Stability ^{4,5} | 0.02 dB typical 0.05 dB max. |
| Crosstalk | -85 dB typical -60 dB max. |
| Back Reflection | -55 dB typical -45 dB max. |
| Switching Time | 15 ms typical 25 ms max. |
| WDL ⁶ | 0.3 dB max. for 2x8 to 16x16 0.4 dB max. for 24x24 to 192x192 |
| PDL | 0.08 dB typical 0.1 dB max. |
| Repeatability ⁷ | 0.01 dB typical 0.06 dB max. |
| Durability | 10 ⁹ Cycles |
| Optical Power | 500 mW max. |
| Operating Temperature | 0 to 50 °C |
| Storage Temperature | -20 to 60 °C |
| Relative Humidity | 0% to 80% non-condensing |
| Fiber Type | 9/125 um singlemode |

- Specifications referenced without connectors at 23 ± 5 °C.
Add 0.4 dB for connector loss.
- Specifications valid when wavelength is set to the wavelength range in use (O, C, L or U band).
Note: Each wavelength band has its own wavelength band index, which can be set to optimize the optical performance for that band. Only one wavelength band index can be selected at a time. The provided wavelength band index will be 1310nm, 1550nm & 1625nm for the full band version. Set a nearby wavelength band index to have the best performance if the selected band has no wavelength band index.
- Insertion Loss (IL) specification is defined at 1550 nm (C band).
Operation at 1310 nm (O band) adds 0.1 dB typical, 0.2 dB max.
Operation at 1590 nm (L band) adds 0.1 dB typical, 0.2 dB max.
Operation at 1625 nm (U band) adds 0.2 dB typical, 0.4 dB max.
- Stability is defined as the difference between highest and lowest insertion loss for a given connection, over a given period.
- Defined over 10 second period using 10 kHz sample rate.
- WDL is measured in a +/- 20 nm range centered at the set wavelength (1310, 1550, 1590 or 1625 nm). Operation in U band adds 0.1 dB to the max.
- Repeatability is defined within 100 cycles.

ELECTRICAL SPECIFICATIONS

| PARAMETER | RATING |
|----------------|--|
| Latching Type | Non-latching |
| Control Type | Ethernet Interface with SCPI Command Set and REST API |
| Supply Voltage | AC 100 - 240 V, 50/60 Hz |

ORDERING INFORMATION

MXS - 9200 - - -

| | |
|-----------------------|---|
| Product Code | MXS-9200 |
| Configuration | 2-8 2 inputs and 8 outputs 2-16 2 inputs and 16 outputs 4-4 4 inputs and 4 outputs 4-8 4 inputs and 8 outputs 4-12 4 inputs and 12 outputs 4-16 4 inputs and 16 outputs 8-8 8 inputs and 8 outputs 8-16 8 inputs and 16 outputs 16-16 16 inputs and 16 outputs 24-24 24 inputs and 24 outputs 32-32 32 inputs and 32 outputs 48-48 48 inputs and 48 outputs 64-64 64 inputs and 64 outputs 96-96 96 inputs and 96 outputs 192-192 192 inputs and 192 outputs <i>Other configurations available upon request.</i> |
| Fiber Type | B 9/125 um singlemode |
| Connector Type | 58 FC/APC connectors 89 FC/UPC connectors 104 LC/APC connectors 101 LC/UPC connectors 88 SC/APC connectors 91 SC/UPC connectors |

CHASSIS SIZE

| SWITCH SIZE | FC | SC | LC |
|-------------|----|----|----|
| 2x8 | 1U | 1U | 1U |
| 2x16 | 1U | 1U | 1U |
| 4x4 | 1U | 1U | 1U |
| 4x8 | 1U | 1U | 1U |
| 4x12 | 1U | 1U | 1U |
| 4x16 | 1U | 1U | 1U |
| 8x8 | 1U | 1U | 1U |
| 8x16 | 1U | 1U | 1U |
| 16x16 | 1U | 1U | 1U |
| 24x24 | 2U | 1U | 1U |
| 32x32 | 2U | 2U | 1U |
| 48x48 | 2U | 2U | 2U |
| 64x64 | 3U | 3U | 2U |
| 96x96 | 4U | 3U | 2U |
| 192x192 | 8U | 6U | 4U |

PM MXN MATRIX, MXS-9200 OPTICAL SWITCH

OPTICAL SPECIFICATIONS^{1,2}

| PARAMETER | RATING |
|-----------------------------|---------------------------------|
| Insertion Loss ³ | 0.8 dB typical 1.4 dB max |
| Stability ^{4,5} | 0.02 dB typical 0.05 dB max. |
| Crosstalk | -85 dB typical -60 dB max. |
| Back Reflection | -55 dB typical -45 dB max. |
| Switching Time | 15 ms typical 25 ms max. |
| WDL ⁶ | 0.3 dB max. |
| PER ⁷ | 22 dB typical 18 dB min. |
| Repeatability ⁸ | 0.01 dB typical 0.06 dB max. |
| Durability | 10 ⁹ Cycles |
| Optical Power | 500 mW max. |
| Operating Temperature | 0 to 50 °C |
| Storage Temperature | -20 to 60 °C |
| Relative Humidity | 0% to 80% non-condensing |
| Fiber Type | Polarization Maintaining |

- Specifications referenced without connectors at 23 ± 5 °C.
Add 0.4 dB for connector loss.
- Specifications valid when wavelength is set to the wavelength range in use (O, C, L or U band).
Note: Each wavelength band has its own wavelength band index, which can be set to optimize the optical performance for that band. Only one wavelength band index can be selected at a time. The provided wavelength band index will be 1310nm, 1550nm & 1625nm for the full band version. Set a nearby wavelength band index to have the best performance if the selected band has no wavelength band index.
- Insertion Loss (IL) specification is defined at 1550 nm (C band).
Operation at 1310 nm (O band) adds 0.1 dB typical, 0.2 dB max.
Operation at 1590 nm (L band) adds 0.1 dB typical, 0.2 dB max.
Operation at 1625 nm (U band) adds 0.2 dB typical, 0.4 dB max.
- Stability is defined as the difference between highest and lowest insertion loss for a given connection, over a given period.
- Defined over 10 second period using 10 kHz sample rate.
- WDL is measured in a +/- 20 nm range centered at the set wavelength (1310, 1550, 1590 or 1625 nm). Operation in U band adds 0.1 dB to the max.
- PER 14dB with connector.
- Repeatability is defined within 100 cycles.

ELECTRICAL SPECIFICATIONS

| PARAMETER | RATING |
|----------------|--|
| Latching Type | Non-latching |
| Control Type | Ethernet Interface with SCPI Command Set and REST API |
| Supply Voltage | AC 100 - 240 V, 50/60 Hz |

ORDERING INFORMATION

MXS - 9200 - □ - □ - □ - □

Product Code

MXS-9200

Configuration

| | |
|-------|--------------------------|
| 2-8 | 2 inputs and 8 outputs |
| 2-16 | 2 inputs and 16 outputs |
| 2-32 | 2 inputs and 32 outputs |
| 4-8 | 4 inputs and 8 outputs |
| 4-16 | 4 inputs and 16 outputs |
| 4-32 | 4 inputs and 32 outputs |
| 8-8 | 8 inputs and 8 outputs |
| 16-16 | 16 inputs and 16 outputs |
| 16-32 | 16 inputs and 32 outputs |
| 32-32 | 32 inputs and 32 outputs |

Other configurations available upon request.

Fiber Type

| | |
|-------------------|------------|
| PM13 ¹ | PM13 fiber |
| PM15 ² | PM15 fiber |

1. PER specification covers 1270nm to 1510nm

2. PER specification covers 1440nm to 1640nm

Connector Type³

| | |
|-----|-------------------|
| 58 | FC/APC connectors |
| 89 | FC/UPC connectors |
| 104 | LC/APC connectors |
| 101 | LC/UPC connectors |
| 88 | SC/APC connectors |
| 91 | SC/UPC connectors |

3. Connector key orientation is default to be slow axis.

CHASSIS SIZE

| SWITCH SIZE | FC | SC | LC |
|-------------|----|----|----|
| 2x8 | 1U | 1U | 1U |
| 2x16 | 1U | 1U | 1U |
| 2x32 | 1U | 1U | 1U |
| 4x8 | 1U | 1U | 1U |
| 4x16 | 1U | 1U | 1U |
| 4x32 | 1U | 1U | 1U |
| 8x8 | 1U | 1U | 1U |
| 16x16 | 1U | 1U | 1U |
| 16x32 | 2U | 2U | 1U |
| 32x32 | 2U | 2U | 1U |

MULTIMODE MxN MATRIX, MXS-9200 OPTICAL SWITCH

OPTICAL SPECIFICATIONS^{1,2}

| PARAMETER | RATING |
|-----------------------------|---------------------------------|
| Insertion Loss ³ | 0.8 dB typical 1.4 dB max |
| Stability ^{4,5} | 0.02 dB typical 0.05 dB max. |
| Crosstalk ⁶ | -70 dB typical -65 dB max. |
| Back Reflection | -25 dB typical -20 dB max. |
| Switching Time | 15 ms typical 25 ms max. |
| Repeatability ⁷ | 0.01 dB typical 0.06 dB max. |
| Durability | 10 ⁹ Cycles |
| Optical Power | 500 mW max. |
| Operating Temperature | 0 to 50 °C |
| Storage Temperature | -20 to 60 °C |
| Relative Humidity | 0% to 80% non-condensing |
| Fiber Type | 50/125 um multimode |
| Operating Wavelength Range | 850 & 1310 nm |

- Specifications referenced without connectors at 23 ± 5 °C.
Add 0.4 dB for connector loss.
- Specifications valid when wavelength is set to the wavelength band.
- IL is measured with a reference mode condition, CPR=15 dB.
- Stability is defined as the difference between highest and lowest insertion loss for a given connection, over a given period.
- Defined over 10 second period using 10 kHz sample rate.
- Optical off state isolation is the same as the crosstalk specification.
- Repeatability is defined within 100 cycles.

ELECTRICAL SPECIFICATIONS

| PARAMETER | RATING |
|----------------|--|
| Latching Type | Non-latching |
| Control Type | Ethernet Interface with SCPI Command Set and REST API |
| Supply Voltage | AC 100 - 240 V, 50/60 Hz |

ORDERING INFORMATION

MXS - 9200 - - - C -

Product Code
MXS-9200

Configuration

| | |
|-------|--------------------------|
| 2-8 | 2 inputs and 8 outputs |
| 2-16 | 2 inputs and 16 outputs |
| 2-32 | 2 inputs and 32 outputs |
| 4-8 | 4 inputs and 8 outputs |
| 4-32 | 4 inputs and 32 outputs |
| 16-16 | 16 inputs and 16 outputs |
| 16-32 | 16 inputs and 32 outputs |
| 32-32 | 32 inputs and 32 outputs |
| 64-64 | 64 inputs and 64 outputs |

Other configurations available upon request.

Fiber Type
C 50/125 um multimode

Connector Type

| | |
|----|---------------|
| 50 | FC connectors |
| 54 | SC connectors |

CHASSIS SIZE

| SWITCH SIZE | FC | SC | LC |
|-------------|----|----|----|
| 2x8 | 1U | 1U | 1U |
| 2x16 | 1U | 1U | 1U |
| 2x32 | 1U | 1U | 1U |
| 4x8 | 1U | 1U | 1U |
| 4x32 | 1U | 1U | 1U |
| 16x16 | 1U | 1U | 1U |
| 16x32 | 2U | 2U | 1U |
| 32x32 | 2U | 2U | 1U |
| 64x64 | 3U | 3U | 2U |

SINGLEMODE 1XN ARRAY, MXS-9200 OPTICAL SWITCH

OPTICAL SPECIFICATIONS¹

| PARAMETER | RATING |
|-----------------------------|--------------------------|
| Insertion Loss ² | 0.7 dB max |
| Crosstalk | -50 dB max. |
| Back Reflection | -50 dB max. |
| Switching Time | 30 ms max. |
| WDL ³ | 0.5 dB max. |
| PDL | 0.15 dB max. |
| Repeatability ⁴ | 0.02 dB max. |
| Durability | 10 ⁹ Cycles |
| Optical Power | 500 mW max. |
| Operating Temperature | 0 to 50 °C |
| Storage Temperature | -20 to 60 °C |
| Relative Humidity | 0% to 80% non-condensing |
| Fiber Type | 9/125 um singlemode |

1. Specifications referenced without connectors at 23 ± 5 °C.

Add 0.4 dB for connector loss.

Note: Each wavelength band has its own wavelength band index, which can be set to optimize the optical performance for that band. Only one wavelength band index can be selected at a time. The provided wavelength band index will be 1310nm, 1550nm & 1625nm for the full band version. Set a nearby wavelength band index to have the best performance if the selected band has no wavelength band index.

2. Insertion Loss (IL) specification is defined at 1550 nm & 1625 nm.

Operation at 1310 nm adds 0.2 dB max.

3. WDL is defined within a wavelength band, and is measured over 1290 - 1330 nm, 1530 - 1570 nm, and 1605 - 1641 nm.

4. Repeatability is defined within 100 cycles.

ELECTRICAL SPECIFICATIONS

| PARAMETER | RATING |
|----------------|---|
| Latching Type | Non-latching |
| Control Type | Ethernet Interface with SCPI Command Set and REST API |
| Supply Voltage | AC 100 - 240 V, 50/60 Hz |

CHASSIS SIZE

| NUMBER OF SWITCHES | 1x4 | | | 1x8 | | |
|--------------------|------------------|------------------|------------------|------------------|------------------|------------------|
| | FC/APC FC/UPC | LC/APC LC/UPC | SC/APC SC/UPC | FC/APC FC/UPC | LC/APC LC/UPC | SC/APC SC/UPC |
| 1 | 1U | 1U | 1U | 1U | 1U | 1U |
| 2 | 1U | 1U | 1U | 1U | 1U | 1U |
| 4 | 1U | 1U | 1U | 1U | 1U | 1U |
| 6 | 1U | 1U | 1U | 2U | 1U | 2U |

ORDERING INFORMATION

MXS - 9200 - 01 - B -

Product Code

| | |
|----------|-----------------------|
| MXS-9201 | 1 switch per system |
| MXS-9202 | 2 switches per system |
| MXS-9204 | 4 switches per system |
| MXS-9206 | 6 switches per system |
| MXS-9208 | 8 switches per system |

Configuration

| | |
|-------|--------------------|
| 01-04 | 1x4 optical switch |
| 01-08 | 1x8 optical switch |

Fiber Type

| | |
|---|---------------------|
| B | 9/125 um singlemode |
|---|---------------------|

Connector Type

| | |
|-----|-------------------|
| 58 | FC/APC connectors |
| 89 | FC/UPC connectors |
| 104 | LC/APC connectors |
| 101 | LC/UPC connectors |
| 88 | SC/APC connectors |
| 91 | SC/UPC connectors |

PM 1X4 ARRAY, MXS-9200 OPTICAL SWITCH

OPTICAL SPECIFICATIONS¹

| PARAMETER | RATING |
|-----------------------------|--------------------------|
| Insertion Loss ² | 0.7 dB max |
| Crosstalk | -50 dB max. |
| Back Reflection | -50 dB max. |
| Switching Time | 30 ms max. |
| WDL ³ | 0.5 dB max. |
| PER ⁴ | 18 dB min. |
| Repeatability ⁵ | 0.02 dB max. |
| Durability | 10 ⁹ Cycles |
| Optical Power | 500 mW max. |
| Operating Temperature | 0 to 50 °C |
| Storage Temperature | -20 to 60 °C |
| Relative Humidity | 0% to 80% non-condensing |
| Fiber Type | Polarization Maintaining |

- Specifications referenced without connectors at 23 ± 5 °C. Add 0.4 dB for connector loss.

Note: Each wavelength band has its own wavelength band index, which can be set to optimize the optical performance for that band. Only one wavelength band index can be selected at a time. The provided wavelength band index will be 1310nm, 1550nm & 1625nm for the full band version. Set a nearby wavelength band index to have the best performance if the selected band has no wavelength band index.

- Insertion Loss (IL) specification is defined at 1550 nm & 1625 nm. Operation at 1310 nm adds 0.2 dB max.
- WDL is defined within a wavelength band, and is measured over 1290 - 1330 nm, 1530 - 1570 nm, and 1605 - 1641 nm.
- PER 14dB with connector.
- Repeatability is defined within 100 cycles.

ELECTRICAL SPECIFICATIONS

| PARAMETER | RATING |
|----------------|---|
| Latching Type | Non-latching |
| Control Type | Ethernet Interface with SCPI Command Set and REST API |
| Supply Voltage | AC 100 - 240 V, 50/60 Hz |

CHASSIS SIZE

| NUMBER OF SWITCHES | 1x4 | | |
|--------------------|------------------|------------------|------------------|
| | FC/APC FC/UPC | LC/APC LC/UPC | SC/APC SC/UPC |
| 1 | 1U | 1U | 1U |
| 2 | 1U | 1U | 1U |
| 4 | 1U | 1U | 1U |

ORDERING INFORMATION

MXS - 920 - 01 - 04 - -

Product Code

| | |
|----------|-----------------------|
| MXS-9201 | 1 switch per system |
| MXS-9202 | 2 switches per system |
| MXS-9204 | 4 switches per system |

Configuration

| | |
|-------|--------------------|
| 01-04 | 1x4 optical switch |
|-------|--------------------|

Fiber Type

| | |
|-------------------|------------|
| PM13 ¹ | PM13 fiber |
| PM15 ² | PM15 fiber |

1. PER specification covers 1270nm to 1510nm

2. PER specification covers 1440nm to 1640nm

Connector Type¹

| | |
|-----|-------------------|
| 58 | FC/APC connectors |
| 89 | FC/UPC connectors |
| 104 | LC/APC connectors |
| 101 | LC/UPC connectors |
| 88 | SC/APC connectors |
| 91 | SC/UPC connectors |

1. Connector key orientation is default to be slow axis.

MULTIMODE 1XN ARRAY, MXS-9200 OPTICAL SWITCH

OPTICAL SPECIFICATIONS^{1,2}

| PARAMETER | | RATING |
|-----------------------------|---------|---|
| Insertion Loss ³ | 1x4 | 1.0 dB max. |
| | 1x8 | 1.0 dB max. |
| | 1x12 | 1.2 dB max. |
| Crosstalk ⁴ | 50 um | -25 dB max. |
| | 62.5 um | -20 dB max. |
| Back Reflection | | -20 dB max. |
| Switching Time | | 30 ms max. |
| Repeatability ⁵ | | 0.02 dB max. |
| Durability | | 10 ⁹ Cycles |
| Optical Power | | 500 mW max. |
| Operating Temperature | | 0 to 50 °C |
| Storage Temperature | | -20 to 60 °C |
| Relative Humidity | | 0% to 80% non-condensing |
| Fiber Type | | 50/125 um multimode, or 62.5/125 um multimode |

- Specifications referenced without connectors at 23 ± 5 °C. Add 0.4 dB for connector loss.
- Specifications valid when wavelength is set to the wavelength band.
- IL is measured with a reference mode condition, CPR=15 dB.
- Optical off state isolation is the same as the crosstalk specification.
- Repeatability is defined within 100 cycles.

ORDERING INFORMATION

MXS - 920 - 01 - - -

Product Code

| | |
|----------|-----------------------|
| MXS-9201 | 1 switch per system |
| MXS-9202 | 2 switches per system |
| MXS-9204 | 4 switches per system |
| MXS-9206 | 6 switches per system |
| MXS-9208 | 8 switches per system |

Configuration

| | |
|-------|--------------------|
| 01-04 | 1x4 optical switch |
| 01-08 | 1x8 optical switch |

Fiber Type

| | |
|---|-----------------------|
| C | 50/125 um multimode |
| D | 62.5/125 um multimode |

Connector Type

| | |
|----|---------------|
| 50 | FC connectors |
| 54 | SC connectors |

ELECTRICAL SPECIFICATIONS

| PARAMETER | RATING |
|----------------|---|
| Latching Type | Non-latching |
| Control Type | Ethernet Interface with SCPI Command Set and REST API |
| Supply Voltage | AC 100 - 240 V, 50/60 Hz |

CHASSIS SIZE

| # OF SWITCHES | 1x4 | | 1x8 | |
|---------------|-----|----|-----|----|
| | FC | SC | FC | SC |
| 1 | 1U | 1U | 1U | 1U |
| 2 | 1U | 1U | 1U | 1U |
| 4 | 1U | 1U | 1U | 1U |
| 6 | 1U | 1U | 2U | 2U |
| 8 | 1U | 1U | 2U | 2U |

MECHANICAL SPECIFICATIONS

| CHASSIS SIZE | HEIGHT | | WIDTH | | DEPTH | |
|--------------|--------|------|-------|----|-------|------|
| | MM | IN | MM | IN | MM | IN |
| 1U | 44 | 1.7 | 483 | 19 | 435 | 17.1 |
| 2U | 88 | 3.5 | 483 | 19 | 435 | 17.1 |
| 3U | 133 | 5.2 | 483 | 19 | 435 | 17.1 |
| 4U | 177 | 7.0 | 483 | 19 | 435 | 17.1 |
| 5U | 222 | 8.7 | 483 | 19 | 435 | 17.1 |
| 6U | 266 | 10.5 | 483 | 19 | 435 | 17.1 |
| 8U | 355 | 14.0 | 483 | 19 | 435 | 17.1 |